



SPECIFICATION

Product	Micro speaker	Issued date	18-Mar-10
Part No.	U1609S01B	Page No.	1 of 3

1. Physical dimension.

Diameter	16 mm × 9 mm (Refer to drawing)
Thickness	3.7 mm (Refer to drawing)
Weight	0.8g ±0.2g

2. Electric characteristics.

Impedance	8 Ω ± 15 % at 1.0V 2KHz.
S.P.L.	91 dB ± 3 dB at 0.9 , 1.0 , 1.2 , 1.5 KHz. Average figures / 4 Pts .
Power	Nor. : 0.5 W (2.0 V)
	Max. : 0.7 W (2.67 V)
Resonant Frequency (Fo)	950 Hz ± 20% at 1.0 V
Effective Frequency band	Fo ~ 20 KHz.
Distortion	Less than 5% at 2 KHz 0.1 W.
Buzz & rattle , etc.	Not be audible at 1.55 V sine wave, Fo ~ 20 KHz.
Load Test	Must be normal with program source 0.3 W. / (1.55V) White noise(EIA) / 96 Hrs.
Magnet	8.6 mm × 5.6 mm × 0.7 T (Rare Earth Permanent Magnet) 4.5 mm × 0.7 T (Rare Earth Permanent Magnet)
Leakage Flux	Front Cover Surface Center : MAX 1000 Gauss

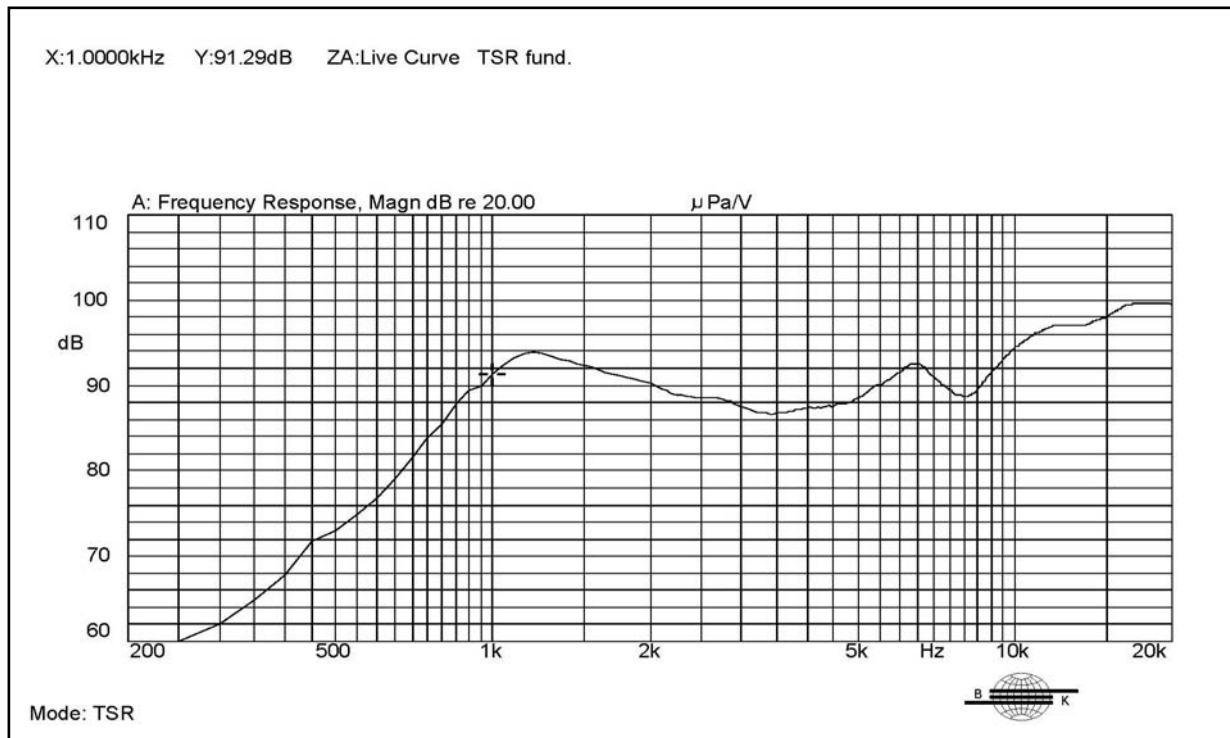
3. Environment Test

High Temperature	+85 °C ± 3 °C 96 Hrs and keep 6 Hrs in a room.
Low Temperature	-40 °C ± 3 °C 96 Hrs and keep 6 Hrs in a room.
Humidity Resistance	+40 °C ± 3 °C 90 % ± 5% 96 Hrs.
Operation Temperature Range	-40 °C ± 3 °C ~ +60 °C ± 3 °C
Storage Temperature Range	-40 °C ± 3 °C ~ +70 °C ± 3 °C

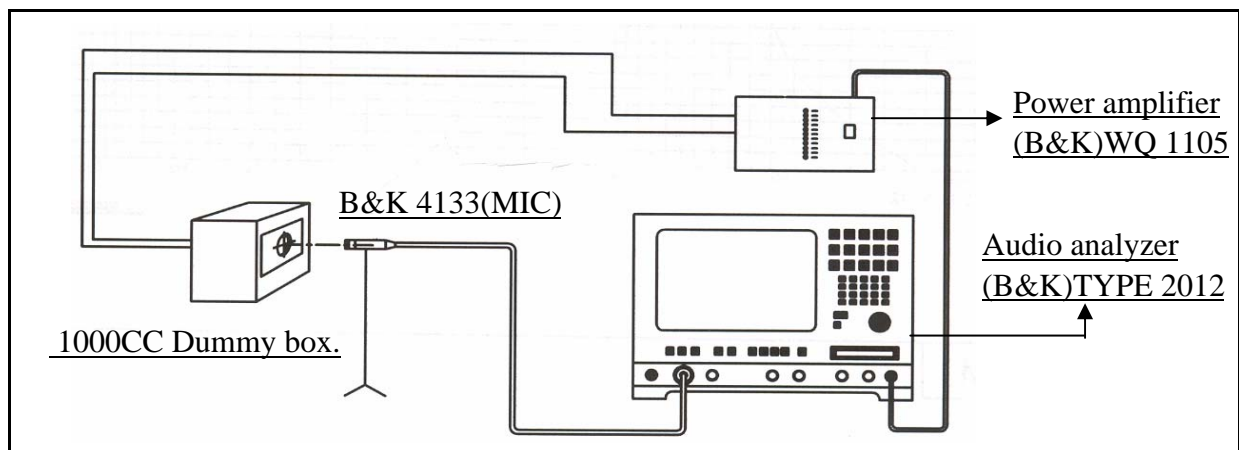
SPECIFICATION

Product	Micro speaker	Issued date	18-Mar-10
Part No.	U1609S01B	Page No.	2 of 3

4. Frequency curve.



5. Test diagram.

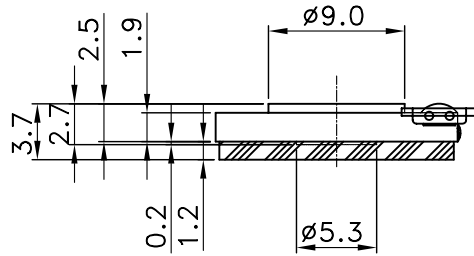
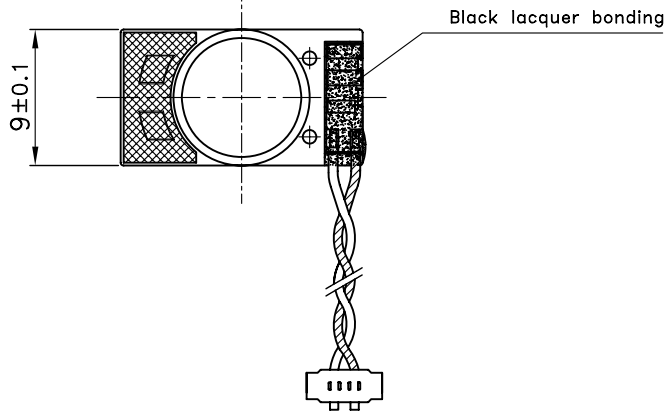
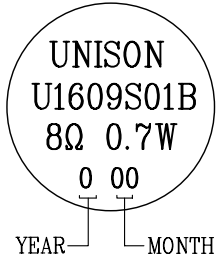


6. Measurement condition.

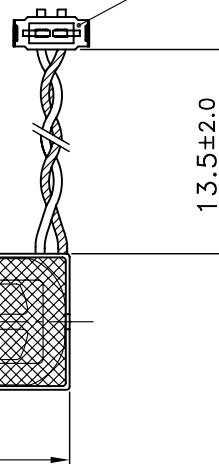
Microphone	B&K 4133	Zero level	60 dB
Mode	TSR	Input power	0.3 W
Mic distance	0.1m	Sweep time	0.5Sec

Model No.		U1609S01B		Page No.		4 of 4	
REV.NO	DATE	DESCRIPTION		DRAW.BY	CHKD.BY	APP.BY	

MARKING



*KYOCERA ELCO
*Part No: 97-8040-002-000-829



NOTE

1. WIRE: (UL3302/AWG32)
2. COLOR: (RED/BLACK)
3. KYOCERA ELCO

Part No: 97-8040-002-000-829

UNIT	mm	DRAW.BY	CHKD.BY	APP.BY	DATE	18-MAR-2010
SCALE	1 : 2	H.S.JANG	I.G.SONG	E.S.CHOI	MODEL NO.	U1609S01B
TOL	±0.2	2010.03.18	2010.03.18	2010.03.18	NOMENCLATURE	MODEL DIMENSION
FRM.UA-G-004-03 Rev.0 UNISON ACOUSTICS CO., LTD.A4(297 X 210)mm						